

# \$325,000 - 626 Pearce Road, Pineville

MLS® #2525852

**\$325,000**

5 Bedroom, 3.00 Bathroom, 2,783 sqft  
Residential on 0.78 Acres

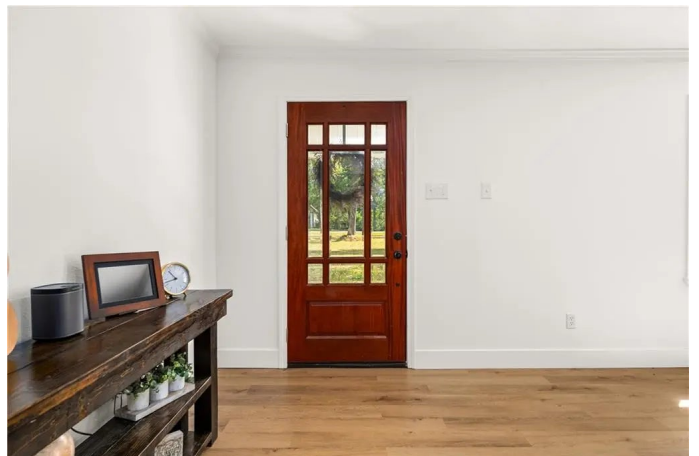
N/A, Pineville, Louisiana

Take a look at this 5 bedroom, 2.5 bathroom completely remodeled home in the heart of Pineville. Perched on a corner lot with 0.78 acres this home has all the curb appeal. Step into the immaculate open living area with a seamless flow from room to room. The gorgeous kitchen is adorned with luxury gold finishes, granite countertops, a pantry, and a breakfast bar apart from the formal dining room. The bedrooms are large and spacious with plenty of natural light. In the primary bedroom you will find a walk-in closet and an en suite bathroom with double vanities, a stand alone tub and a tile shower. The backyard features a storage shed and a cozy covered back patio area. This home is a perfect blend of stylish updates and tons of space making it the perfect fit for you.

Built in 1973

## Essential Information

MLS® #	2525852
Price	\$325,000
Bedrooms	5
Bathrooms	3.00
Full Baths	2
Half Baths	1
Square Footage	2,783
Acres	0.78
Year Built	1973



Type	Residential
Sub-Type	Detached, Ranch
Status	Active

### **Community Information**

Address	626 Pearce Road
Subdivision	N/A
City	Pineville
County	Rapides
State	Louisiana
Zip Code	71360

### **Amenities**

Parking	Carport, Two Spaces
---------	---------------------

### **Interior**

Interior Features	Ceiling Fan(s), Carbon Monoxide Detector, Granite Counters, Pantry
Appliances	Dishwasher, Oven, Range
Heating	Central
Cooling	Central Air
Fireplace	Yes
Fireplaces	Wood Burning

### **Exterior**

Exterior	Brick Veneer
Lot Description	City Lot, Rectangular Lot
Roof	Shingle
Construction	Brick Veneer
Foundation	Slab



Listing Courtesy of Gulf South Real Estate Information Network

Copyright 2025, New Orleans Metropolitan Association of REALTORS®, Inc. All rights reserved. Information deemed reliable, but not verified or guaranteed. Users are responsible for checking the accuracy, completeness, currency, and status of all information.