

\$14,900 - Old Mansfield Road, Shreveport

MLS® #2521231

\$14,900

0 Bedroom, 0.00 Bathroom,
Land on 0.97 Acres

N/A, Shreveport, Louisiana

Owner financing available. Nearly 1 acre corner lot. Easy access to Mansfield Rd & 3132 Inner Loop Expressway.

Commercial-residential mix neighborhood with electric, gas, water & sewer available at street. Neighboring businesses include Lowe's, restaurants, automotive services & other small businesses. Zoned C-1 (Neighborhood Commercial) - lower intensity commercial business with light traffic (office, medical, dental, restaurant). This property is not in a flood zone.

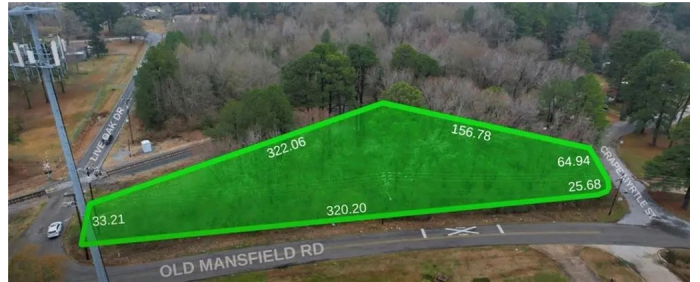
Essential Information

MLS® #	2521231
Price	\$14,900
Bathrooms	0.00
Acres	0.97
Type	Land
Status	Active

Community Information

Address	Old Mansfield Road
Subdivision	N/A
City	Shreveport
County	Caddo
State	Louisiana
Zip Code	71118

Exterior



Lot Description City Lot, Irregular Lot

Additional Information

Days on Market 9

Zoning C-1



Listing Courtesy of Gulf South Real Estate Information Network

Copyright 2025, New Orleans Metropolitan Association of REALTORS®, Inc. All rights reserved.
Information deemed reliable, but not verified or guaranteed. Users are responsible for checking the
accuracy, completeness, currency, and status of all information.