

\$699,000 - 102 Ryans Way Way, Minden

MLS® #2513541

\$699,000

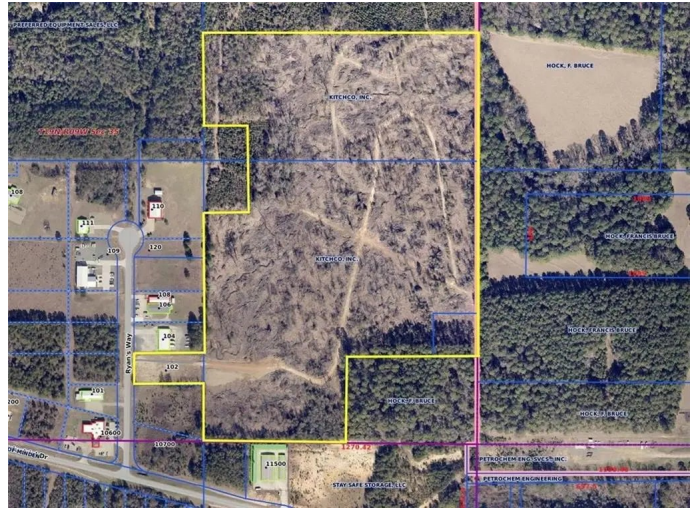
0 Bedroom, 0.00 Bathroom,
Commercial Sale on 50.00 Acres

N/A, Minden, Louisiana

52 plus acres of Certified Commercial Land with Interstate access. Just off Industrial Dr with convenient access to I-20 at Hwy 531 exit. Has been approved by the Louisiana Economic Development Certified Sites Program - a program that thoroughly vets land sites to ensure they meet the requirements necessary for business operation & growth. Zoned B-4 (Highway Commercial). Versatile location for commercial, light industrial, manufacturing, agricultural, automotive, recreation, self storage, warehouse distribution, school, medical, office, retailâ€” Neighboring businesses include Northwest Louisiana Technical Community College, medical clinics, self-storage, travel stops & more. Seller has had some large trees & brush cleared for road access into property. Electric, gas, water & sewer available at street. This property is not in a flood zone. Driving directions: Google Maps or Realist Map link in ML

Essential Information

MLS® #	2513541
Price	\$699,000
Bathrooms	0.00
Acres	50.00
Type	Commercial Sale
Status	Active



Address	102 Ryans Way Way
Subdivision	N/A
City	Minden
County	Webster
State	Louisiana
Zip Code	71055

Amenities

Parking	Parking Lot
---------	-------------

Exterior

Lot Description	Acreage, Outside City Limits
-----------------	------------------------------

Additional Information

Days on Market	74
Zoning	B-4



Listing Courtesy of Gulf South Real Estate Information Network

Copyright 2025, New Orleans Metropolitan Association of REALTORS®, Inc. All rights reserved. Information deemed reliable, but not verified or guaranteed. Users are responsible for checking the accuracy, completeness, currency, and status of all information.