

\$217,500 - 133 Moss Ridge Drive, Pineville

MLS® #2505318

\$217,500

3 Bedroom, 2.00 Bathroom, 1,990 sqft
Residential on 0.96 Acres

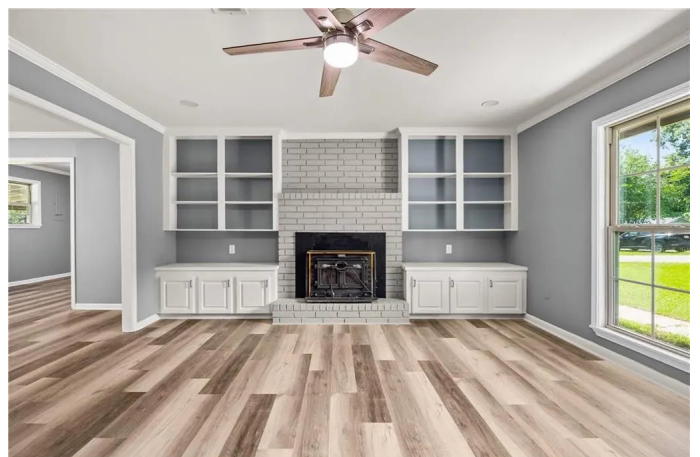
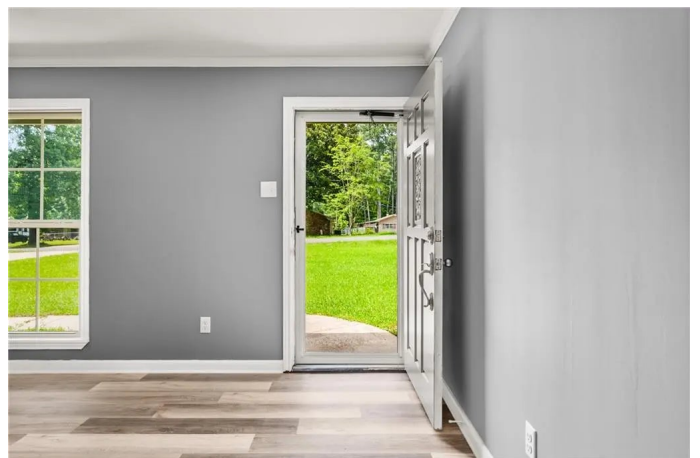
MOSS RIDGE, Pineville, Louisiana

Welcome to your dream home in Pineville, LA! This beautifully renovated 1990 HSF ranch offers a perfect blend of modern comfort and classic charm, situated on a spacious .96-acre lot on a serene dead-end street. Step inside to discover an inviting living room featuring stunning vinyl flooring, cozy fireplace, built-in shelving, and freshly painted walls that create a bright and airy atmosphere. With 3 bedrooms and 2 bathrooms, this home provides ample space for guests. The primary bedroom suite is a true retreat, complete with a stylish stall shower, new fixtures/mirrors, ensuring a luxurious start to your day. Enjoy the peaceful surroundings on your covered back patio, store extra yard items in your new storage shed, all while having plenty of room for outdoor activities. Whether you're hosting gatherings or simply enjoying nice evenings in the fresh air, this home is designed for both relaxation and entertainment. Don't miss the opportunity to make this fully renovated gem your own! Schedule a showing today and experience all that this delightful ranch has to offer. **QUALIFIES FOR RURAL DEVELOPMENT FINANCING!**

Built in 1974

Essential Information

MLS® #	2505318
Price	\$217,500



Bedrooms	3
Bathrooms	2.00
Full Baths	2
Square Footage	1,990
Acres	0.96
Year Built	1974
Type	Residential
Sub-Type	Detached, Ranch
Status	Active

Community Information

Address	133 Moss Ridge Drive
Subdivision	MOSS RIDGE
City	Pineville
County	Rapides
State	Louisiana
Zip Code	71360

Amenities

Parking	Attached, Carport, Two Spaces
Pool	None

Interior

Interior Features	Ceiling Fan(s), Carbon Monoxide Detector, Stainless Steel Appliances
Appliances	Disposal, Microwave, Oven, Range
Heating	Central
Cooling	Central Air, 1 Unit
Fireplace	Yes
Fireplaces	Wood Burning

Exterior

Exterior	Brick Veneer
Lot Description	Outside City Limits, Rectangular Lot
Roof	Shingle
Construction	Brick Veneer
Foundation	Slab

School Information

Elementary	Mary Goff
------------	-----------

Middle	TJH
High	THS

Additional Information

Days on Market 111



Listing Courtesy of Gulf South Real Estate Information Network

Copyright 2025, New Orleans Metropolitan Association of REALTORS®, Inc. All rights reserved. Information deemed reliable, but not verified or guaranteed. Users are responsible for checking the accuracy, completeness, currency, and status of all information.