

# \$18 - 9338 Highway 165, Woodworth

MLS® #2495020

**\$18**

0 Bedroom, 0.00 Bathroom, 4,538 sqft  
Commercial Lease

PATRIOT, Woodworth, Louisiana

update: only two space available. one is 1155 and the other space is in building process for nail salon.

Newest Commerical Plaza in Woodworth right on Hwy 165. Currently with 2600 sq ft available to fit your business needs. Woodworth is in demand for Nail Salon, Boutique, Retail Shop, Medical Office, and Restaurant. One of the fastest growing area with new apartments built behind it and more development on the way including high end duplexes.

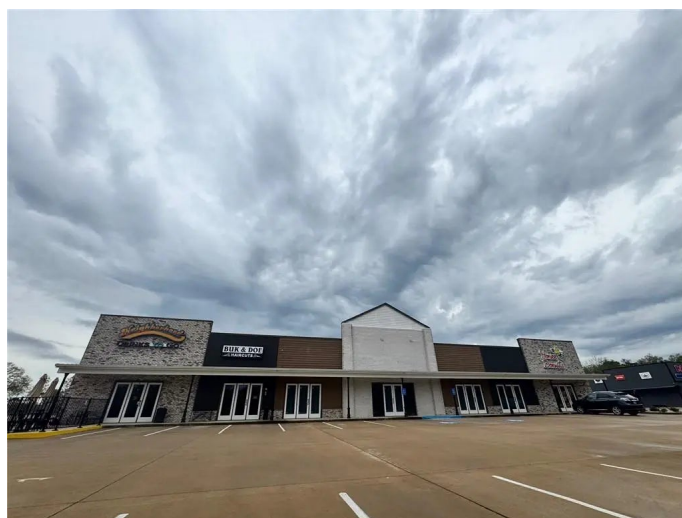
Built in 2022

## Essential Information

MLS® #	2495020
Price	\$18
Bathrooms	0.00
Square Footage	4,538
Year Built	2022
Type	Commercial Lease
Sub-Type	Office
Status	Active

## Community Information

Address	9338 Highway 165
Subdivision	PATRIOT
City	Woodworth
County	Rapides
State	Louisiana
Zip Code	71485



## Amenities

Parking                      None

## Interior

Heating                      Central

Cooling                      Central Air

# of Stories                      1

## Exterior

Lot Description              1 to 5 Acres, City Lot

## Additional Information

Days on Market              186



Listing Courtesy of Gulf South Real Estate Information Network

Copyright 2025, New Orleans Metropolitan Association of REALTORS®, Inc. All rights reserved. Information deemed reliable, but not verified or guaranteed. Users are responsible for checking the accuracy, completeness, currency, and status of all information.