

\$4,500,000 - Highway 1 Wm, MANSURA

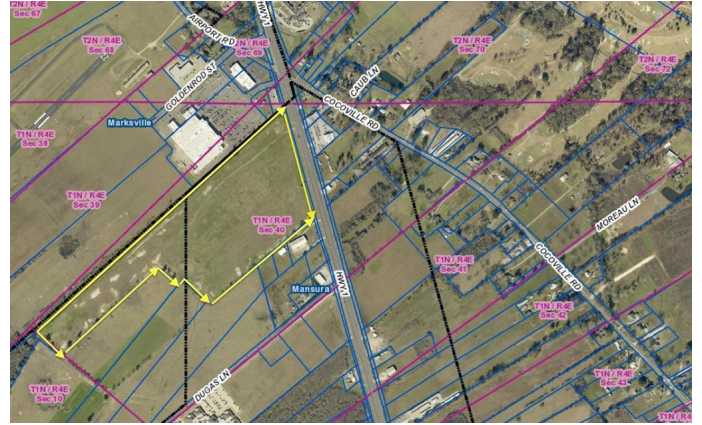
MLS® #141216

\$4,500,000

0 Bedroom, 0.00 Bathroom,
Land on 45 Acres

N/A, MANSURA, LA

This prime commercial property is located on Hwy. 1 just South of Walmart is the perfect location for any business. Property has over 1,000 feet frontage on Hwy 1.



Essential Information

MLS® #	141216
Price	\$4,500,000
Bathrooms	0.00
Acres	45.00
Type	Land
Sub-Type	Unimproved Land
Status	Active

Community Information

Address	Highway 1 Wm
Area	510 Avoyelles Parish
Subdivision	N/A
City	MANSURA
County	Avoyelles
State	LA
Zip Code	71350

Amenities

Utilities Natural Gas Available, Sewer Available, Water Available, Electricity Available

Exterior

Lot Description 45 acres

Additional Information

Date Listed	March 27th, 2017
Days on Market	1834
HOA Fees	0.00

Listing Details

Listing Agent	Joseph Dufour
Listing Office	Listing Provided Courtesy of Berkshire Hathaway HomeServices Ally Real Estate via Central Louisiana Board of REALTORS

The information being provided by Central Louisiana Board of REALTORS is for the consumer's personal, non-commercial use and may not be used for any purpose other than to identify prospective properties consumer may be interested in purchasing. Any information relating to real estate for sale referenced on this web site comes from the Internet Data Exchange (IDX) program of the Central Louisiana Board of REALTORS. Berkshire Hathaway HomeServices Ally Real Estate is not a Multiple Listing Service (MLS), nor does it offer MLS access. This website is a service of Berkshire Hathaway HomeServices Ally Real Estate, a broker participant of Central Louisiana Board of REALTORS. This web site may reference real estate listing(s) held by a brokerage firm other than the broker and/or agent who owns this web site. The accuracy of all information, regardless of source, including but not limited to open house information, square footages and lot sizes, is deemed reliable but not guaranteed and should be personally verified through personal inspection by and/or with the appropriate professionals. The data contained herein is copyrighted by Central Louisiana Board of REALTORS and is protected by all applicable copyright laws. Any unauthorized dissemination of this information is in violation of copyright laws and is strictly prohibited. Copyright © 2022 Central Louisiana Board of REALTORS. All rights reserved.

Listing information last updated on December 5th, 2022 at 9:01am CST